



Wedel Bulls, built for cowmen & the feedyards that buy their calves...

Calving Ease with Power:

-4.2 BW to 126 YW EPD Spread
(Lowest 9% BW to top 2% YW)

Gain: 123 ADG Ratio
.34 ADG EPD (Top 1%)

Grade: .76 Marbling EPD (Top 6%)
.86 REA EPD (Top 1%)

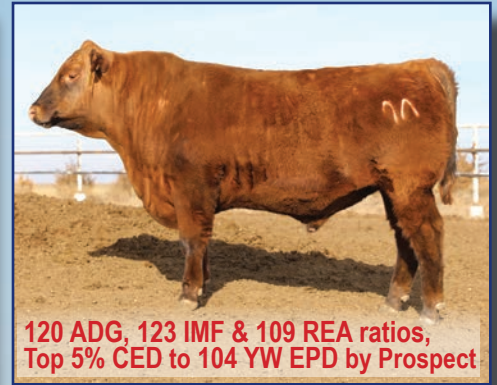
Cows: 18 Stayability EPD (Top 1%)



16 Calving Ease EPD (Top 1%)
.64 Marbling EPD (Top 15%)



Best 4% Calving Ease to 120 YW EPD
130 IMF ratio, .85 Marb EPD (Top 4%)



120 ADG, 123 IMF & 109 REA ratios,
Top 5% CED to 104 YW EPD by Prospect

15th Annual Bull & Replacement Sale

Tuesday, March 10, 2015 • 12:00 Noon (CST)

- 125 - Red Angus & Red Angus Hybrid Bulls
- 200 - Open Yearling Commercial Heifers
- 40 - Fall Calving Commercial Bred Heifers



WEDEL
RED ANGUS

Frank & Susan Wedel • (620) 375-2578
1012 W. County Rd. K • Leoti, KS 67861
fswedel@wbsnet.org • wedelredangus.com

SUPERIOR
Productions

DVAuction
Broadcasting Real-Time Auctions