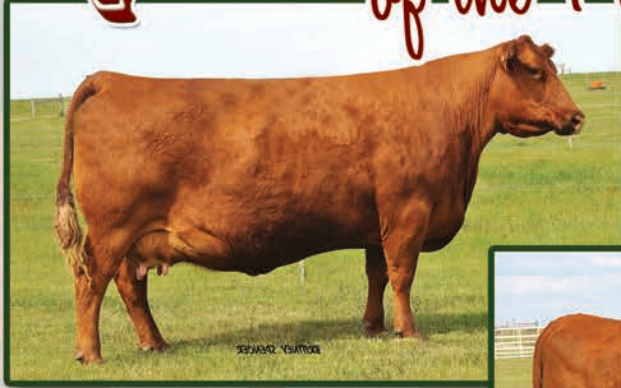


# QUEENS *of the Pasture*



Offering two embryo packages from this donor!  
RED COCKBURN MS FANNY 191M // RAAA# 1445636



Genetics from this powerful donor sell!  
NSFR MTX W14 // RAAA# 1310477  
Dam to several open heifers



Genetics from this powerful donor sell!  
RED SOO LINE ANNIE 8192 // RAAA# 1438341  
Dam to 33 pictured below



This Donor Sells as Lot 2 carrying a bull calf!  
RED SSS DUCHESS 692X // RAAA# 1610909  
Bred to FEDDES GRANITE Z132



Lot 28 // RAAA# 1611366 // Heifer Calf



Lot 33 // RAAA# 1611026 // Heifer Calf

View catalog and videos of the sale offering on our website!

[HTTP://RUSTMOUNTAINVIEWRANCH.COM](http://rustmountainviewranch.com)

## NOVEMBER 25, 2013 - 1PM

Turtle Lake Weigh Station  
Turtle Lake, ND

Selling 80 Lots!!

Opens // Breds // Embryo Packages

**RUST MOUNTAIN VIEW RANCH**

-Josh and Trista Rust  
Home - 701-447-2479  
Cell - 701-391-9769  
rustmountainviewranch@hotmail.com  
-John and Annette Rust  
Home - 701-447-2667  
-Jesse and Amy Rust  
Cell - 701-391-8228  
rustmountainviewranch@yahoo.com

3rd Annual  
"ACE IN THE HOLE" BULL SALE  
Monday, Feb 24, 2014

Sale Managed by:  
[www.alliedgeneticresources.com](http://www.alliedgeneticresources.com)  
Garrett Thomas - 936-714-4591  
Marty Ropp - 406-581-7835



**DVAuction** Broadcasting Real-time Auctions